

Siklu Alignment

Alignment Process

Under Construction

Link Budget Calculator

The [Siklu Link Budget Calculator](#) predicts link availability in a given location. This should be done first, to calculate optimal signal levels. We can use this information when performing fine alignment with a digital multi-meter.

Video: [How to use Link Budget Calculator](#)

Video: [Siklu Etherhaul Antenna Alignment](#)

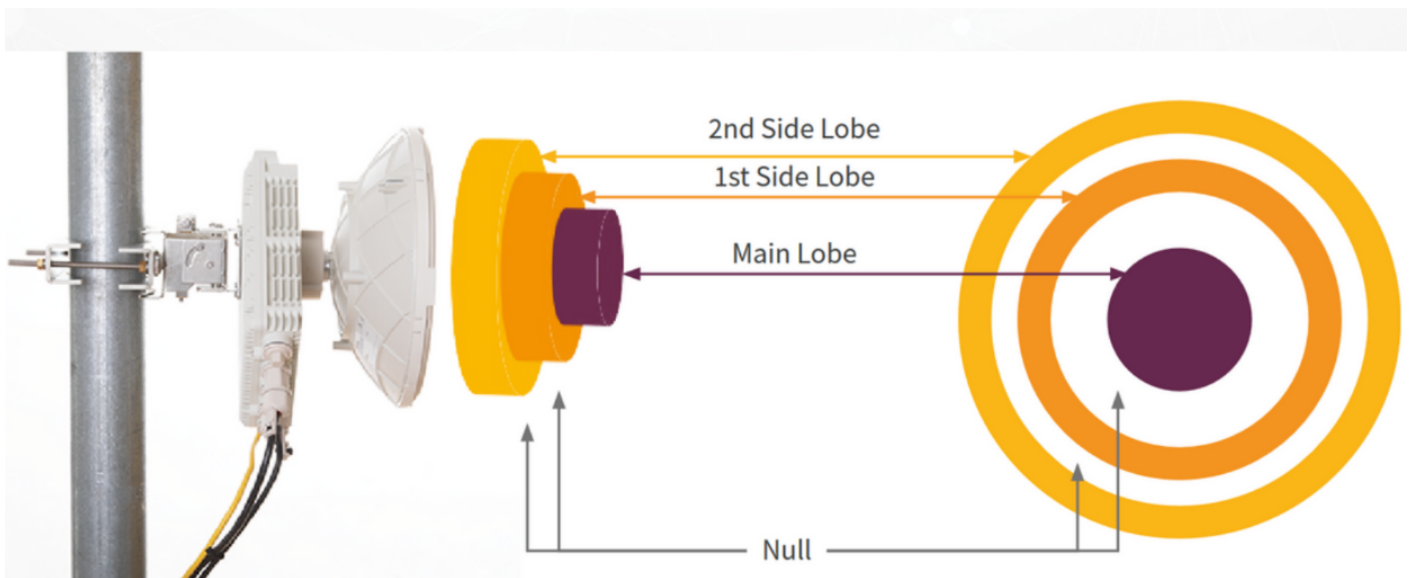
Coarse Alignment

Coarse alignment should be done after mounting the antenna.

Video: [Coarse Alignment](#)

Fine Alignment

The Siklu radiation pattern has multiple "lobes," a bit like two concentric donuts (side lobes) around the center target (main lobe). These are effectively "lumps" in signal strength emitted by the antenna. Like a mountain top there are many local peaks, but only one true highest point.



Video: [Aligning Large Form-Factor Radios](#)

To align the Siklu:

- sweep through all these lobes in pitch and yaw
- record the signal strength values
- determine the maximum signal strength nearest the expected RSSI according to link budget calculator
- finally align the antenna at this maximum position and bolt it permanently in place

Alignment Tool



A system of digital output multimeter and logging software can aid in the alignment process. This software creates a [Grafana](#) graph of the signal strength / lobes, removing the need to manually record with pen and paper.

Video: [Using a Digital Multi-Meter to Perform Fine Alignment](#)

Software:

[GitHub link](#)

Hardware

[TP4000zc multimeter](#) (Ask Andy to borrow the meter + cables)

See Also:

Siklu, before its [aquisition by Ceragon in December 2023](#), had a very helpful technical support staff. Since then, a lot of the Siklu documentation has disappeared from the website, only a [support email](#) is provided. Luckily the [Siklu YouTube channel](#) still exists, we still have some guides squirreled away in this [Master Drive Folder](#). Notably:

- [EtherHaul 8010 Series Installation and Operations Manual](#)
- [Siklu Antenna Alignment Technical Training Slideshow](#)
- [Do's and Don'ts on the Alignment of Siklu's 2ft Antenna](#)

Revision #7

Created 10 June 2024 03:20:48 by Andy

Updated 13 July 2024 20:22:22 by Marg Suarez