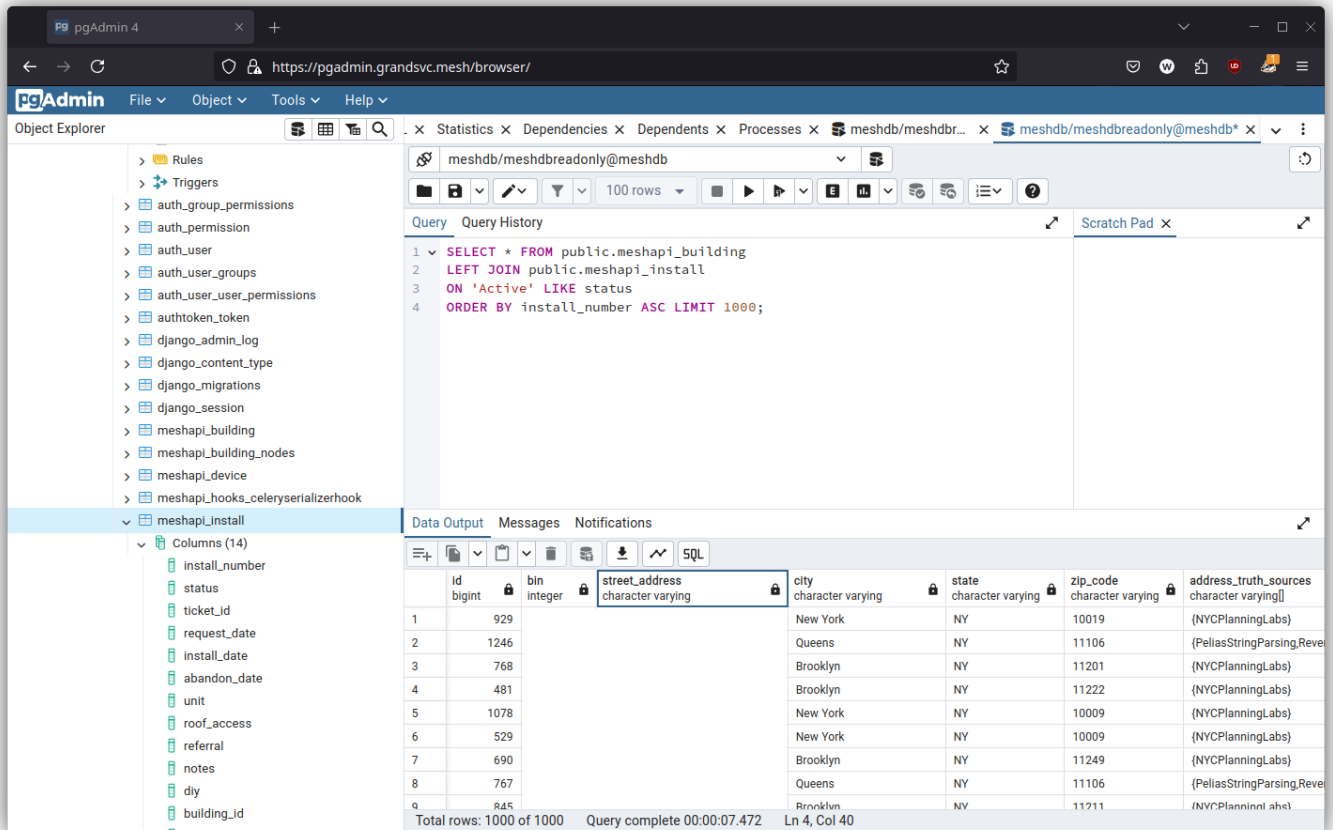


# PGAdmin



MeshDB exposes PGAdmin internally on the mesh at the following link:

- <https://db.mesh.nycmesh.net/pgadmin/>

It uses ACME certificates from Traefik to encrypt traffic, so it should be reasonably secure.

To get access, ask in the #meshdb channel for an account. This is a separate account from your MeshDB account, and is meant for folks who need more powerful READ ONLY access to MeshDB.

By default, your account will be authorized to access MeshDB's read-only Postgres user. If you *really* need write access for some reason (such as to fix a mistake using some SQL-Fu), please loop in an administrator.

---

Revision #8

Created 14 July 2024 19:58:59 by Willard Nilges

Updated 24 August 2024 04:06:58 by James